

Colour photos

from the article on

European paper wasps

(*Polistes dominula*)

in the April 2011 BMN newsletter

Fig 1: European paper wasp on nest.

Photo by M. Stefiuk, Kanaka Education & Environmental Partnership Society

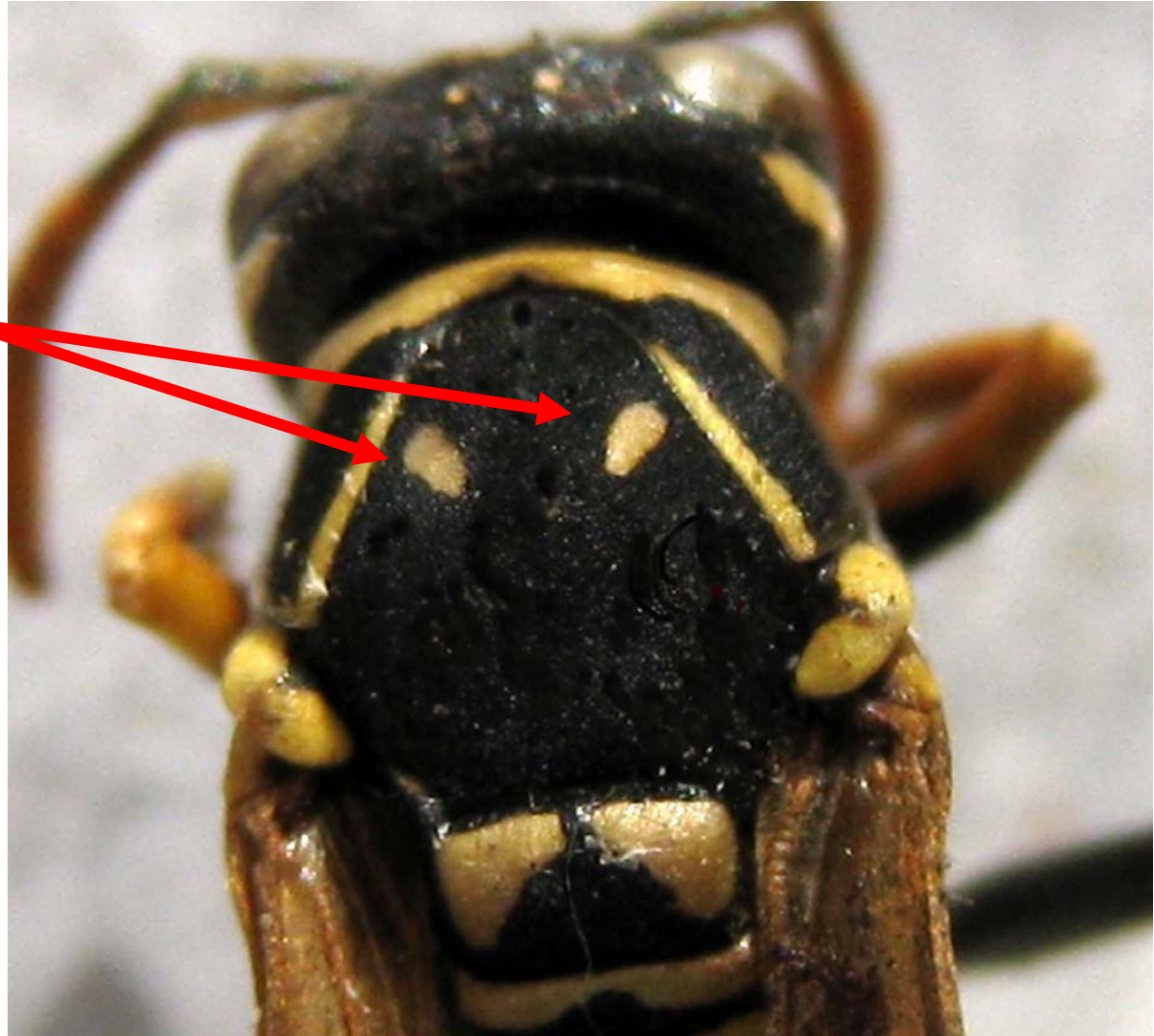


Fig. 2: Mass of paper wasp nests under eaves of electrical shed at Colony Farm.  
Photo by H. Maguire.



Fig. 3: The pair of small yellow spots on the back, immediately behind the head help identify this as *P. dominula*. Photo by V. Otton.

*pair of yellow spots on anterior half of scutum*



# Links to Cited Articles

(if clicking on these doesn't open them, copy and paste into your url address window)

1. [http://www.royalbcmuseum.bc.ca/content\\_files/files/collections%20and%20research/natural%20history/entomology/polistes\\_dominulusesbc.pdf](http://www.royalbcmuseum.bc.ca/content_files/files/collections%20and%20research/natural%20history/entomology/polistes_dominulusesbc.pdf)
2. [http://www.biology.ualberta.ca/bsc/ejournal/bmc\\_05/74p\\_dominula.html](http://www.biology.ualberta.ca/bsc/ejournal/bmc_05/74p_dominula.html)
3. <http://www.sialis.org/paperwasp.htm>